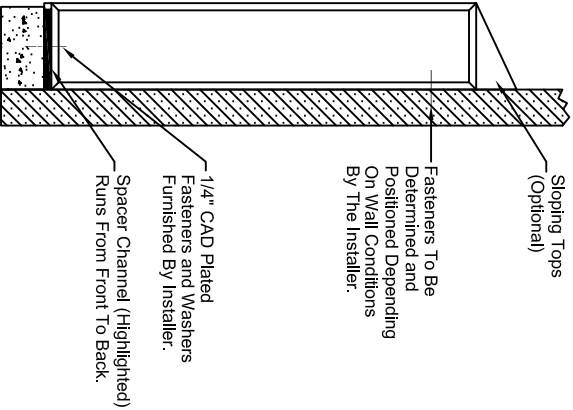
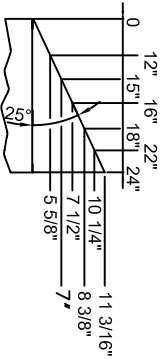
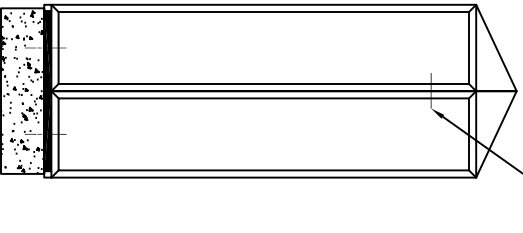


ATHLETIC & CORRIDOR LOCKER INSTALLATION DETAIL

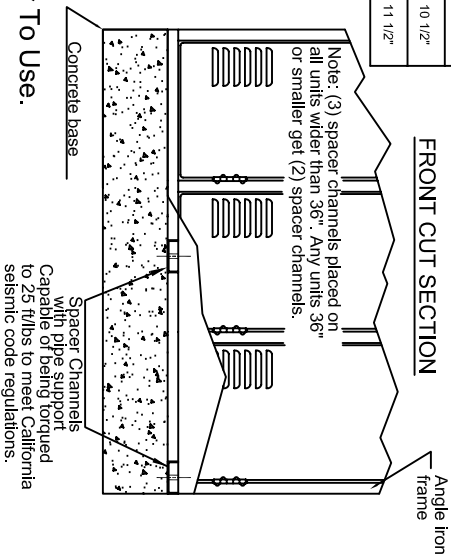
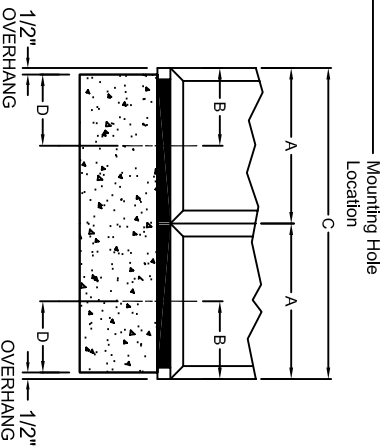
If you have any questions, please call 1-800-328-8829

Slope Top Scribe and End Scribe Available Upon Request.



LOCKER TYPE	LOCKER DEPTH	A	B	C	D
Wall Mount	12" Deep	12"	6"		5 1/2"
	15" Deep	15"	7 1/2"		7"
	16" Deep	16"	8"		7 1/2"
	18" Deep	18"	9"		8 1/2"
Back To Back	22" Deep	22"	11"		10 1/2"
	24" Deep	24"	12"		11 1/2"
	12" Deep	12"	6"	24"	5 1/2"
	15" Deep	15"	7 1/2"	30"	7"
Back To Back	16" Deep	16"	8"	32"	7 1/2"
	18" Deep	18"	9"	36"	8 1/2"
	22" Deep	22"	11"	44"	10 1/2"
	24" Deep	24"	12"	48"	11 1/2"

NOTE: Drawings are not drawn to scale. Areas requiring filler are designated by notation. Non-designated areas may not require any filler.



All Lockers Must Be Secured To The Wall And/Or Floor Prior To Use.