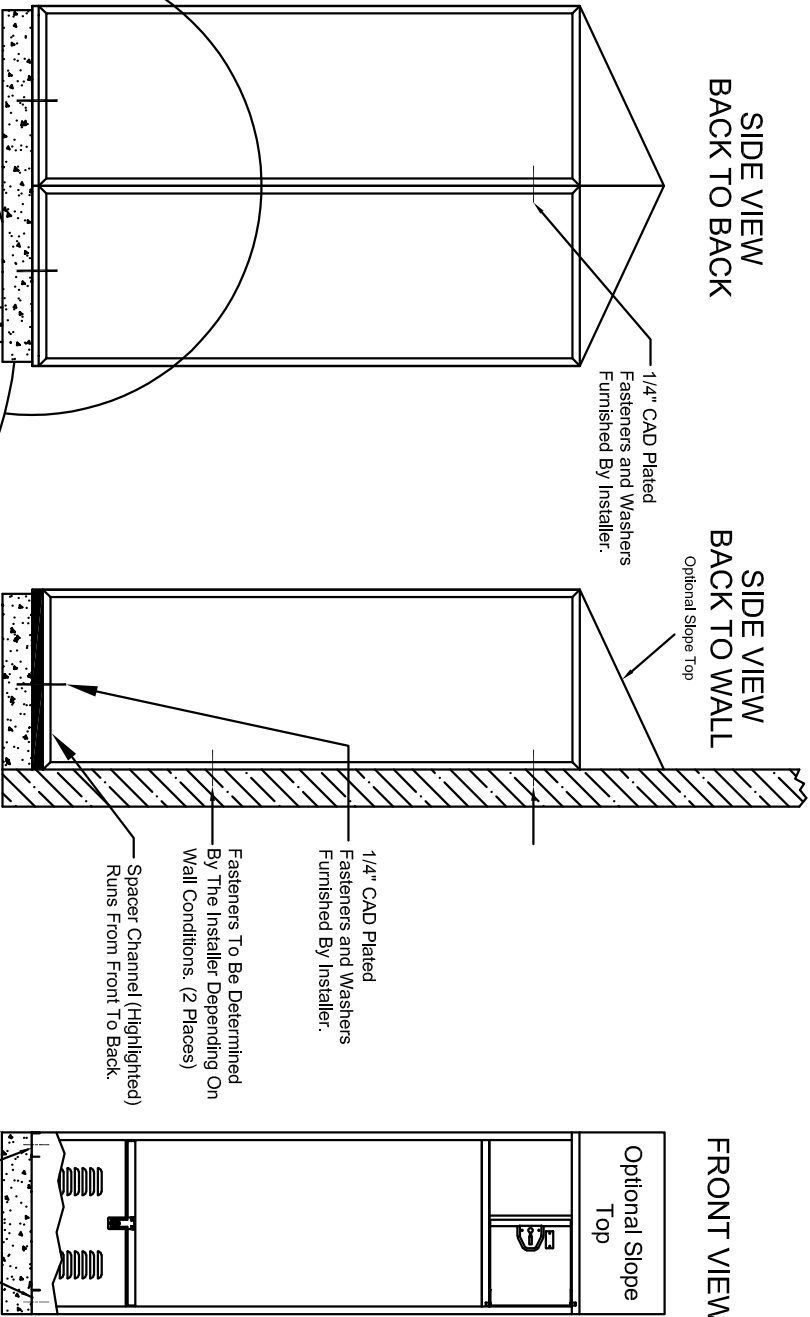


# EXAMPLE COLLEGIATE LOCKER INSTALLATION DETAIL

If you have any questions, please call 1-800-328-8829

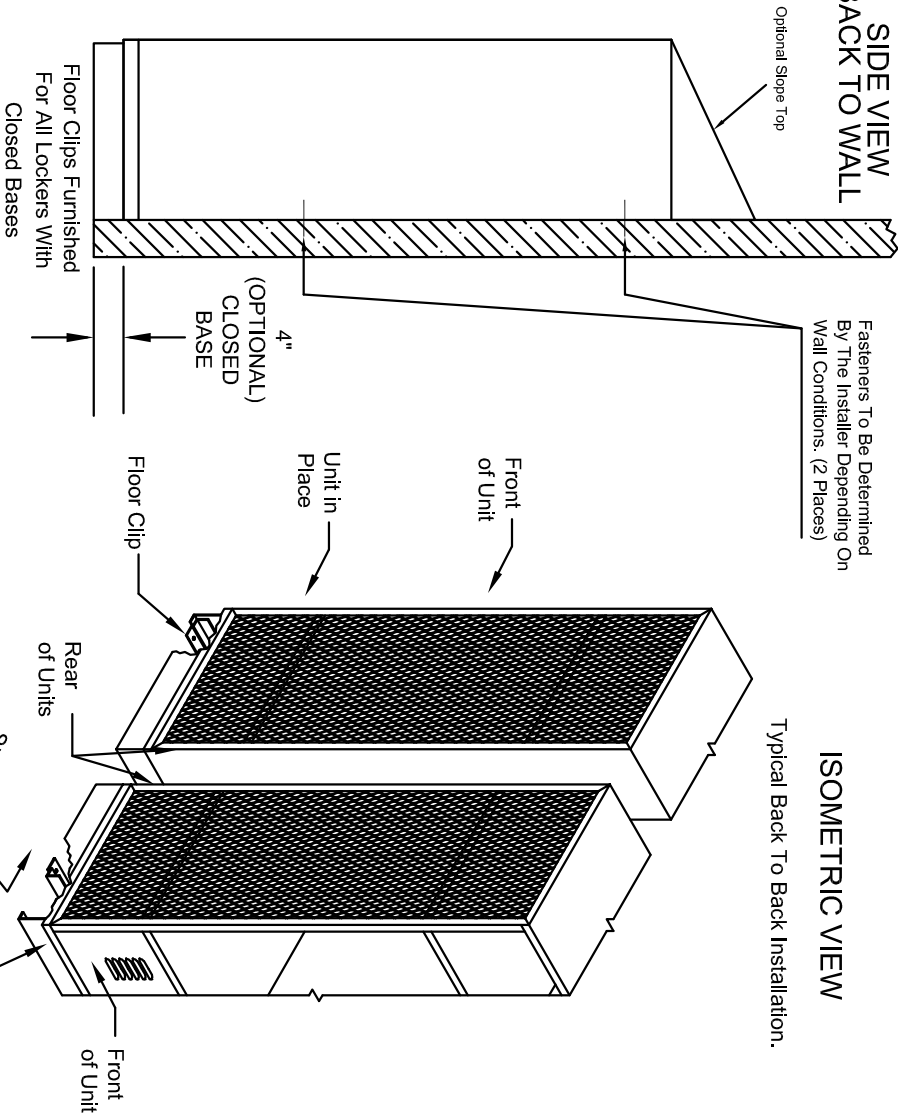
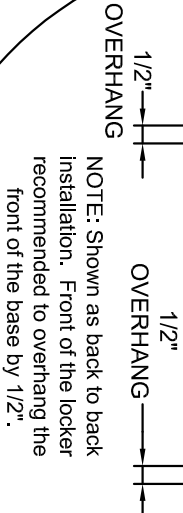
Typical Locker Unit Installation On New Or Existing Base

Typical Installation With Optional Closed Base By DeBourgh



Note: (2) spacer channels placed on all units.

Mounting Hole Location					
LOCKER TYPE	LOCKER DEPTH	A	B	C	D
		18" Deep	18"	9"	
Wall Mount	22" Deep	22"	11"		10 1/2"
	24" Deep	24"	12"		11 1/2"
	18" Deep	18"	9"	36"	8 1/2"
Back To Back	22" Deep	22"	11"	44"	10 1/2"
	24" Deep	24"	12"	48"	11 1/2"



## Recommended Installation Hardware (Not Included)

Side To Side	Back To Back	Back To Wall	Bottom To Floor
(4) 1/4-20 x 1" CAD plated bolts, nuts and washers. Mesh sides may require larger fender style washers.	(2) 1/4-20 x 3/4" CAD Plated Bolts, Nuts And Washers. Recommended Minimum (2) Per Locker Unit	To Be Determined By Wall Conditions, Installer Preference. Recommended Minimum (2) Per Locker Unit.	To Be Determined By Floor Conditions, Installer Preference. Recommended Minimum (2) Per Locker Unit.

NOTE: To prevent tipping, all lockers must be anchored to wall and / or floor prior to use. Disregarding this may result in injury.

NOTE: Drawings are not drawn to scale.