

# EXAMPLE FIRST RESPONDER LOCKER INSTALLATION DETAIL

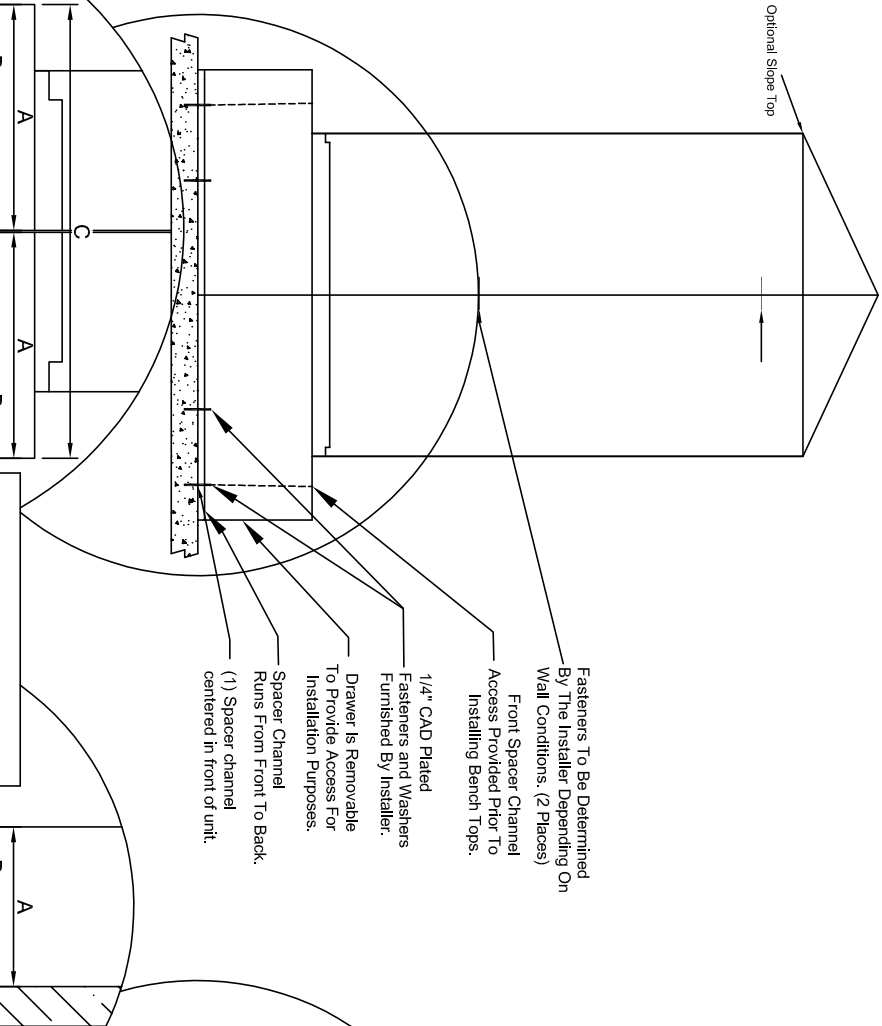
If you have any questions, please call 1-800-328-8829

Unit Shown With Optional Drawer Base

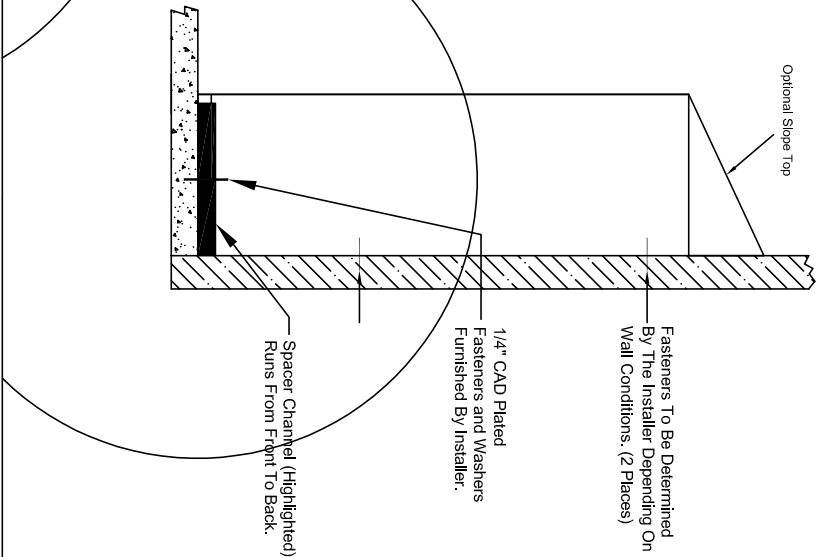
Unit Shown Without Optional Drawer Base

Unit Shown With Optional Closed Base

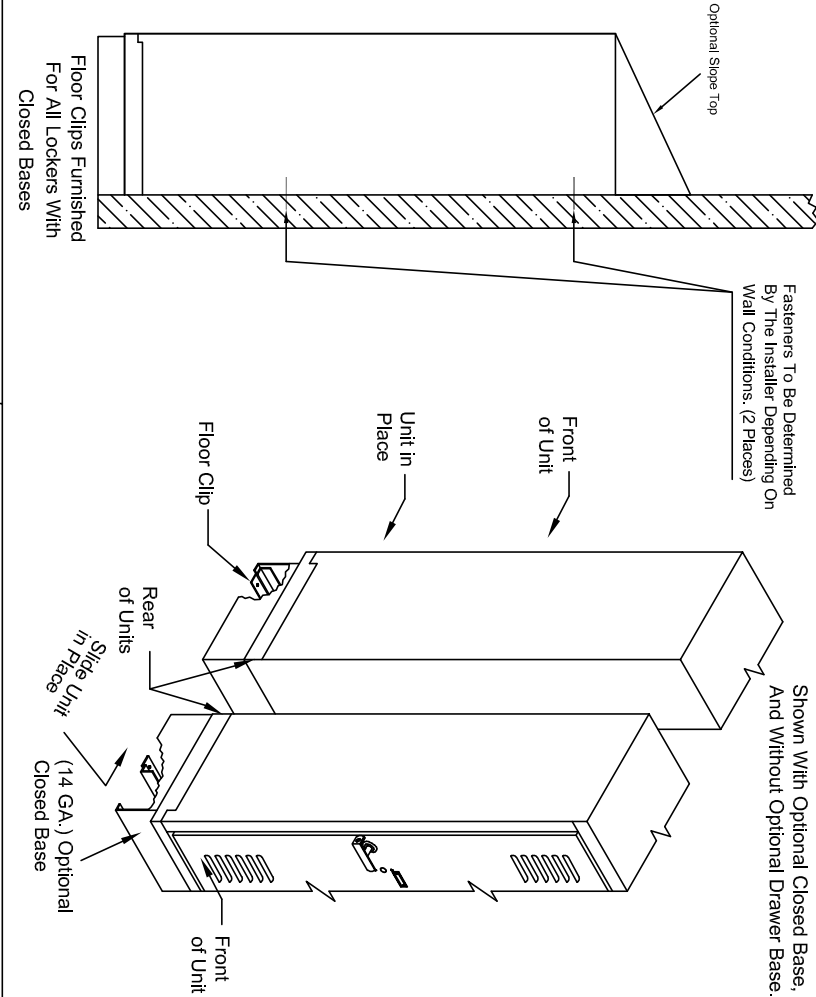
SIDE VIEW  
BACK TO BACK



SIDE VIEW  
BACK TO WALL



SIDE VIEW  
BACK TO WALL



Mounting Hole Location		
LOCKER FULL TYPE	A	B C
With 1/4\"	34"	17" 68"
Without 1/4\"	34"	12" 48"

Recommended Installation Hardware (Not Included)				
Bench Top	Side To Side	Back To Back	Back To Wall	Bottom To Floor
Recommended 1/4 x 1" lag screw, along length of bench. 4 places per locker unit.	(4) 1/4-20 x 3/4" CAD plated bolts, nuts and washers.	(2) 1/4-20 x 3/4" CAD Plated Bolts, Nuts And Washers. Recommended Minimum (2) Per Locker Unit	To Be Determined By Wall Conditions, Installer Preference. Recommended Minimum (2) Per Locker Unit.	To Be Determined By Floor Conditions, Installer Preference. Recommended Minimum (3) Per Locker Unit With Optional Drawer Base. (2) Per Locker Unit Without Optional Drawer Base
NOTE: Locker units with moveable shelves will be furnished with push in snap rivets. Ensure proper installation of these (4 per shelf). Disregarding this may result in injury.				
NOTE: Continuous bench tops are sold in 1ft increments and include 1-1/4" full bullnose edge on all sides with 1" radius on all corners. Standard bench tops must be cut and fit in field. Custom cut sizes offered for an upcharge.				
NOTE: To prevent tipping, all lockers must be anchored to wall and / or floor prior to use. Disregarding this may result in injury.				
NOTE: Drawings are not drawn to scale.				