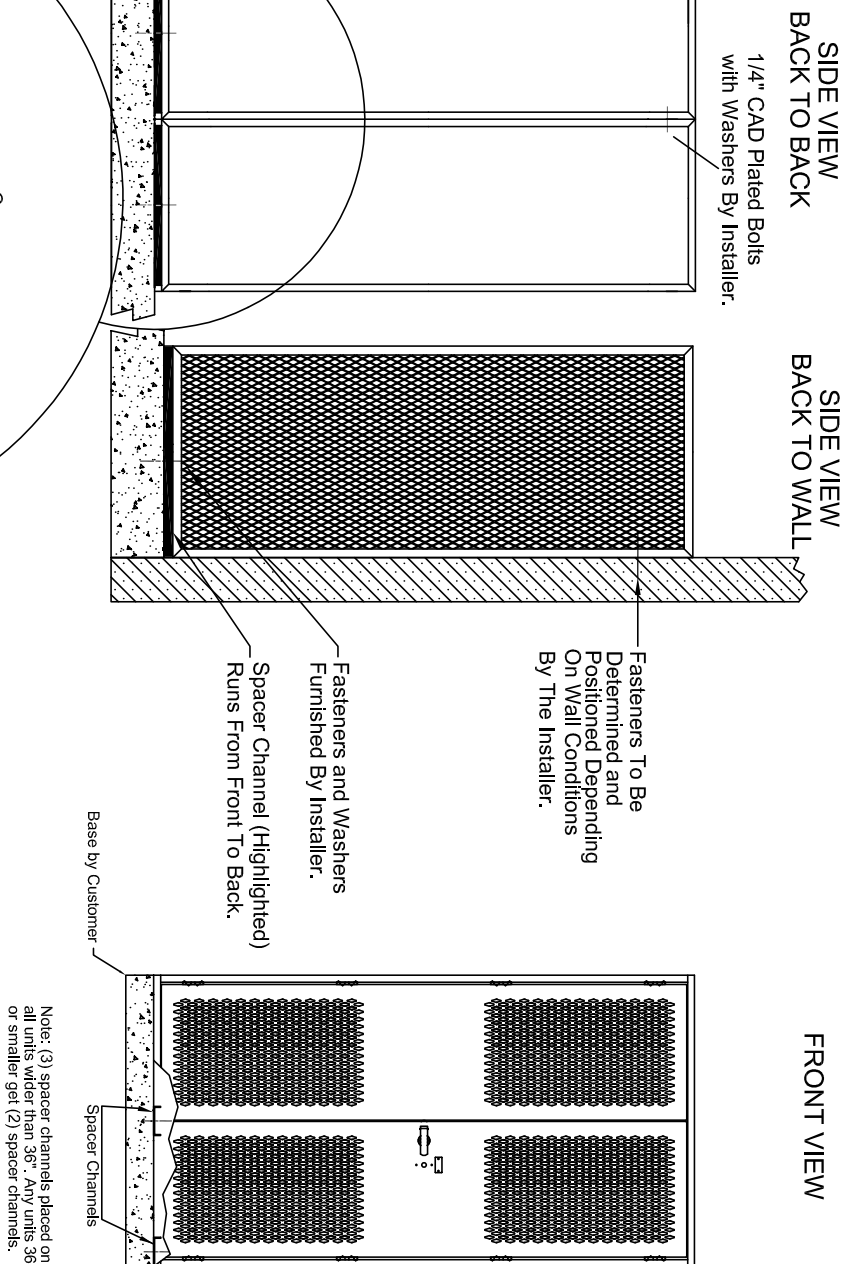


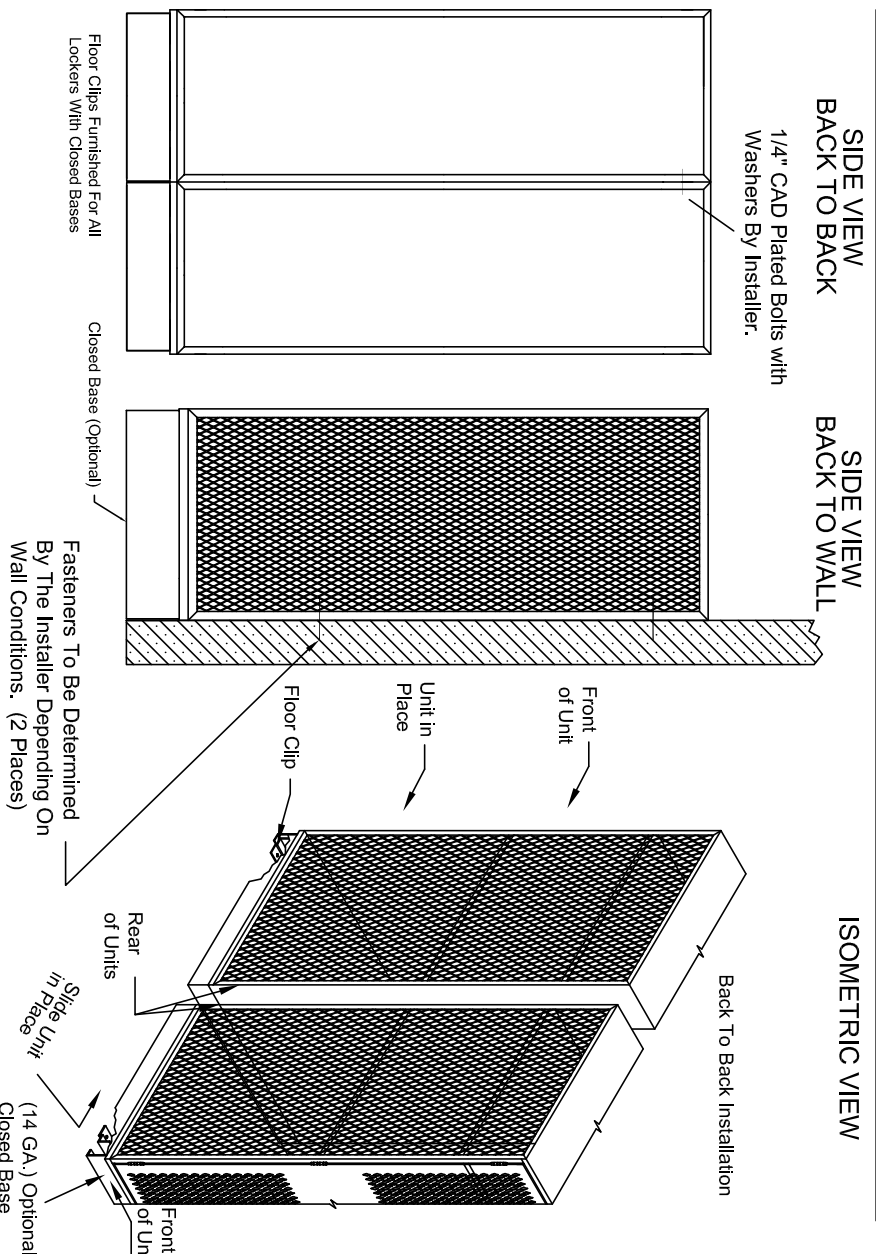
EXAMPLE TA-50 LOCKER INSTALLATION DETAIL

If you have any questions, please call 1-800-328-8829

Typical Locker Unit Installation On New Or Existing Base



Typical Installation With Optional Closed Bases By DeBourgh



Mounting Hole Location				
LOCKER TYPE	LOCKER DEPTH	A	B	C
Wall Mount	24" Deep	24"	12"	
	36" Deep	36"	18"	
	42" Deep	42	21"	
Back To Back	24" Deep	24"	12"	48"
	36" Deep	36"	18"	72"
	42" Deep	42"	21"	84"

NOTE: Front of the locker recommended to overhang the front of the base by 1/2".

Recommended Installation Hardware (Not Included)				NOTE: Locker units with moveable shelves will be furnished with push in snap rivets. Ensure proper installation of these (4 per shelf). Disregarding this may result in injury.
Side To Side	Back To Back	Back To Wall	Bottom To Floor	
(4) 1/4-20 x 1" CAD plated bolts, nuts and washers. Mesh sides may require larger fender style washers.	(2) 1/4-20 x 3/4" CAD Plated Bolts, Nuts And Washers. Recommended Minimum (2) Per Locker Unit	To Be Determined By Wall Conditions, Installer Preference. Recommended Minimum (2) Per Locker Unit.	To Be Determined By Floor Conditions, Installer Preference. (3) For Units Wider than 36", (2) For Units 36" Wide And Less.	NOTE: To prevent tipping, all lockers must be anchored to wall and / or floor prior to use. Disregarding this may result in injury.
NOTE: Drawings are not drawn to scale.				