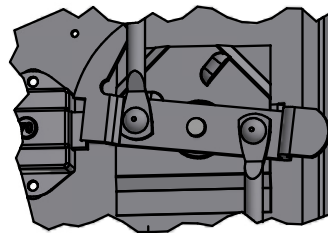
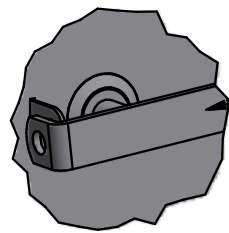


**3-POINT ALL-WELDED
TURN HANDLE LATCH**



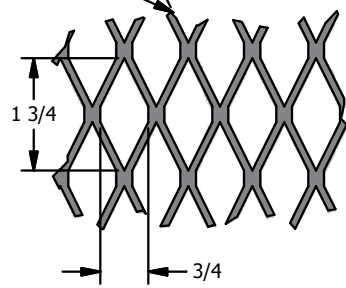
REAR VIEW



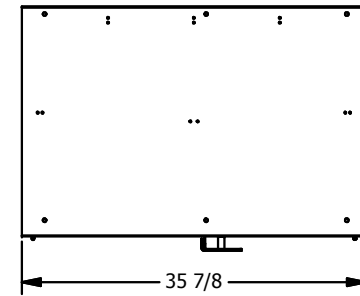
FRONT VIEW

3/16 CRS x 1 x 4 TURN HANDLE WITH 11GA PADLOCK HASP.

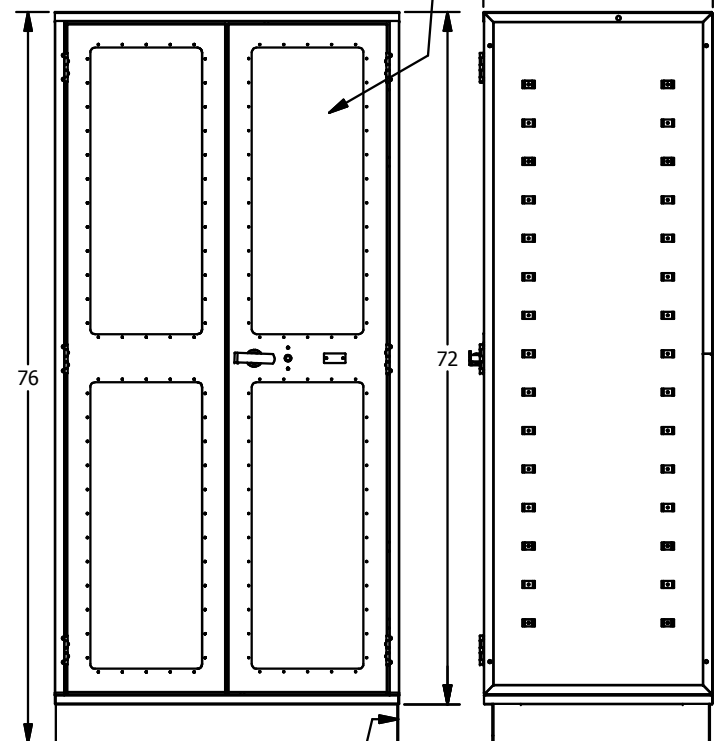
13GA EXPANDED METAL INSERT.



1x1x1/8 ANGLE IRON CONTINUOUS DOOR FRAME WITH (2) 13GA EXPANDED METAL (MESH) INSERTS WITH TWO [(1) 13GA FRONT AND (1) 16GA REAR] SUPPORTS FOR A (3)-POINT, (3)-SIDED CREMONE LATCHING MECHANISM.



1/4" THICK CLEAR POLYCARBONATE PANELS IN A 14GA FORMED FRAME.



4 INCH CLOSED BASE

16 GA CRS TOP HAS A DOUBLE RETURN BEND ON THE FRONT SIDE WITH A SINGLE RETURN BEND ON ALL OTHERS.

14 GA CRS FORMED SINGLE PIECE DOOR WITH DOUBLE RETURN BENDS ON THE VERTICAL SIDES AND SINGLE RETURN BENDS ON THE HORIZONTAL SIDES WITH LOUVERS AS VENTILATION.

18GA BACK PANEL WELDED TO THE DOOR.

16 GA COLD ROLL STEEL (CRS) ONE PIECE BACK PER UNIT.

16 GA CRS SHELF WITH (2) 14GA HAT CHANNEL STIFFENERS HAS A DOUBLE RETURN BEND ON THE FRONT AND A SINGLE RETURN BEND ON ALL OTHER SIDES. 1000 LB DISTRIBUTED LOAD CAPACITY PER SHELF.

HEIGHT =
36"
48"
54"
60"
72"
84"

SHELVES ARE FULLY ADJUSTABLE EVERY 4 INCHES ON CENTER

DEPTH = 18", 24"

WIDTH = 36", 48", 60"

1x1x1/8 ANGLE IRON CONTINUOUS SIDE FRAME WITH A 16 GA SOLID PANEL WITH BRIDGES FOR ADJUSTABLE SHELVES. UNITS CAN BE ATTACHED SIDE-TO-SIDE WITH FOUR 1/4" BOLTS.

16 GA CRS BOTTOM HAS A DOUBLE RETURN BEND ON THE FRONT SIDE WITH A SINGLE RETURN BEND ON ALL OTHERS.

14 GA CRS 4" HIGH CLOSED BASE IS WELDED TO THE BOTTOM OF THE LOCKER UNIT AT THE FACTORY. THE BASE IS SET BACK 13/16" FROM THE FRONT OF THE LOCKER. FRONT HALF NOT SHOWN. (SPACER CHANNELS USED WHEN NO CLOSED BASE IS SPECIFIED).

16GA SPACER CHANNELS WITH PIPE TUBE STIFFENERS. ANCHORS MAY BE TORQUED TO 25 FT-LBS. (CLOSED BASES NOT USED WITH SPACER CHANNELS).

DRAWN	8/26/2013
D Gutscher	
CHECKED	
QA	
MFG	
APPROVED	

DeBourgh Mfg. Co.

TITLE
INDUSTRIAL STORAGE CABINET

INDUSTRIAL STORAGE CABINET, W_SOLID, POLY-CARB, AI-MESH DOORS, SOLID SIDES, ADJUSTABLE SHELVES AND CLOSED BASE

SIZE	DWG NO	REV
B	35.9x24x72 ISC w_Solid DBL Drs and Adj-Shelves w_Solid Sides	

SCALE

SHEET 1 OF 1